



Northeast Washington Forest Coalition's (NEWFCs) mission is to work collaboratively with public and government interests to steward and conserve forest ecosystems so plants, animals, and communities thrive. NEWFC's board includes the timber industry, environmental groups, recreation interests, foresters, local business owners, and others along with a diverse group of technical advisors. Formed in 2002, NEWFC works with the Colville National Forest (CNF) and other state and local groups and agencies to promote ecological forest and watershed restoration, recreation, wildlands protection, and economic stability in the community. By working together, the CNF has maintained an integrated, diverse forest products infrastructure through the infamous "Timber Wars" and the 2008 recession.

For over 15 years, NEWFC has operated under an agreement called the Blueprint, which splits the CNF into three management zones:

- Active Management - The front country roaded landscape including Wildland Urban Interface (WUI) zones subject to stewardship forestry.
- Restoration – Generally unroaded or lightly roaded areas closer to backcountry, some that may benefit from light-touch ecological restoration due to past management or fire suppression.
- Wilderness – Inventoried Roadless Areas and some non-inventoried backcountry roadless areas to be congressionally designated as Wilderness.

As an update to the Blueprint, the Strategic Vision (SV) builds on almost 20 years of success. The purpose of the SV is to incorporate landscape ecology and other new science, embrace societal values and changes, and reflect the new 2019 CNF Forest Plan. This living and dynamic document sets the stage, and serves as a roadmap for productive collaboration into the future.

### **Strategic Vision Outcomes**

- 1) Combines active management and restoration zones into one community ecological restoration zone in order to align with recent landscape scale restoration science.
- 2) Updates wildland areas, incorporates recreation, and includes tribal acknowledgement to align with new information, and recent science.
- 3) Builds on previously developed principles for effective and efficient project planning.

### Active Management and Restoration Zones combined into one Community Restoration Zone

- The two zones were combined into one Community Restoration Zone to better incorporate landscape ecology and other new restoration science. The science now supports accomplishing forest and watershed restoration to support ecological resilience by mimicking natural disturbance processes through a combination of forest management, prescribed burning, fuel reduction, managed wildfire, road management, etc., and support communities through timber production as a byproduct of these actions.

### Updates wildland areas, incorporates recreation, and includes tribal acknowledgment

- NEWFC supports protecting all Inventoried Roadless areas and Wilderness designations for recommended wilderness areas in the 2019 CNF Forest Plan including Abercrombie-Hooknose, Bald-Snow, and Salmo-Priest additions. We also support a measured approach to permanently

986 South Main Street, Suite C2 Colville WA 99114

[www.newforestcoalition.com](http://www.newforestcoalition.com)

NEWFCinfo@gmail.com



# NORTHEAST WASHINGTON FOREST COALITION

protect other wildlands, including the Kettle Crest, through legislated designations, such as a monument, a national conservation area, and/or Wilderness.

- With a measurable increase in recreation over the last several years, it is crucial that project planning is robust and integrated, and tools such as legislation are utilized to secure and sustain recreational uses into the future.
- Indigenous people have occupied what is now the CNF since time immemorial, and amplifying tribal cultural values is long overdue. NEWFC supports elevating tribal voices through education, recognition of tribal ancestral lands, and potential cultural designations.

## Builds on previously developed principles to streamline projects

Since 2008, NEWFC has collaboratively developed and agreed upon a set of principles outlining our common ground on management actions proposed in CNF projects. Proposed projects that align the Principles have collaboration support while those that fall outside of them are subject to further dialogue and collaborative work. NEWFC principles are not a hard line, but are guidance, and a place to start in order to develop collaborative solutions for the toughest of challenges.

### 16 Principles

|                                |   |
|--------------------------------|---|
| Aesthetics                     | Post-disturbance restoration            |
| Commercial harvest in IRAs     | Recreation                              |
| Dry forest management          | Roads                                   |
| Economics and infrastructure   | Prescribed fire and wildfire            |
| Implementation and contracting | Spatially explicit landscape evaluation |
| Large tree protections         | Stand heterogeneity                     |
| Monitoring                     | Strategic fuel treatment                |
| Non-inventoried roadless areas | Wilderness                              |

### What's next?

For nearly 20 years, NEWFC has succeeded in working with the Forest Service through dialogue around a broad table as well as through administrative processes to accomplish and advance forest restoration across the CNF. Along the way, NEWFC members helped to bring the community and the forest beyond the timber wars and into a new era of restoration and social engagement on public lands.

Looking ahead, NEWFC will continue to build on landscape restoration successes, but there will simultaneously be a focused intention to implement conservation, recreation, and tribal components that can best be realized through legislation. A new partnership, known as NEW Heritage, has formed out of NEWFC to work on this legislative effort.

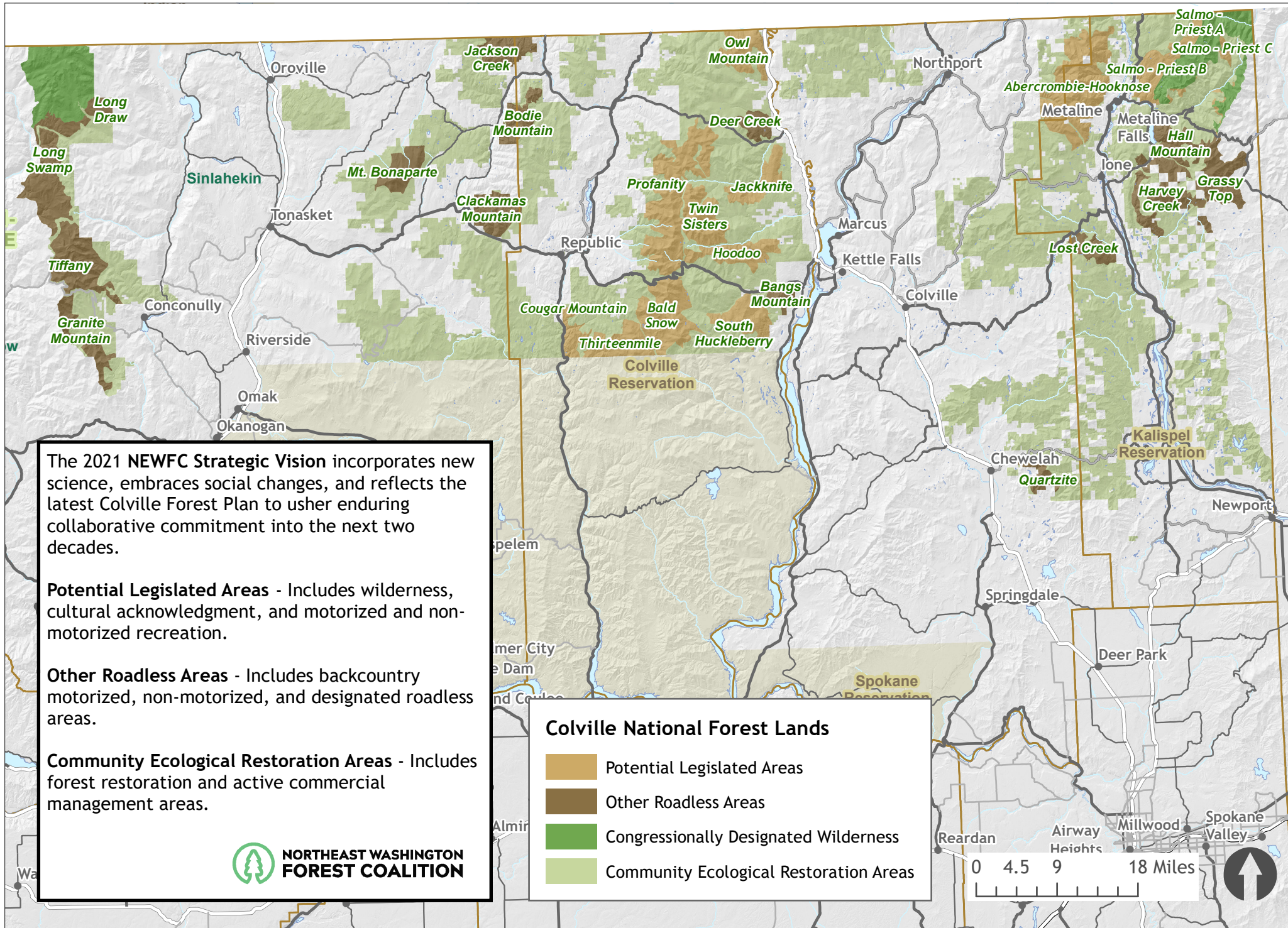
986 South Main Street, Suite C2 Colville WA 99114

[www.newforestcoalition.com](http://www.newforestcoalition.com)

NEWFCinfo@gmail.com



# Northeast Washington Forest Coalition Strategic Vision



The 2021 NEWFC Strategic Vision incorporates new science, embraces social changes, and reflects the latest Colville Forest Plan to usher enduring collaborative commitment into the next two decades.

**Potential Legislated Areas** - Includes wilderness, cultural acknowledgment, and motorized and non-motorized recreation.

**Other Roadless Areas** - Includes backcountry motorized, non-motorized, and designated roadless areas.

**Community Ecological Restoration Areas** - Includes forest restoration and active commercial management areas.

**Colville National Forest Lands**

- Potential Legislated Areas
- Other Roadless Areas
- Congressionally Designated Wilderness
- Community Ecological Restoration Areas

